



New Hope Elementary

Allen Lewis, Principal
 Allen Lewis, Prior Principal
 137 Stowe Road
 Gastonia, NC 28056 8560

(704) 824-1617
 Grades K-5
 Regular School
 Traditional Calendar

Gaston County Schools

HIGH STUDENT PERFORMANCE

Performance of Students in Each Grade on the ABCs End-of-Grade Tests

Percentage of Students' Scores At or Above Grade Level

	Grade 3		Grade 4		Grade 5		OVERALL	
	Reading	Math	Reading	Math	Reading	Math	Reading	Math
Our School	84.8%	92.4%	85.3%	94.1%	78.9%	92.1%	82.6%	92.7%
District	67.1%	80.8%	70.1%	81.4%	70.8%	81.7%	69.5%	80.3%
State	67.6%	82.1%	71.6%	83.8%	72.3%	82.0%	70.7%	82.4%

N/A = Fewer than five students

SCHOOL PROFILE

School Size

The total number of students in this school and the average number of students in schools with similar grade ranges at the district and state levels.

	OUR SCHOOL	DISTRICT	STATE
	534	443	497

Average Class Size

The average number of students enrolled in a "typical" K-8 classroom.
 * Legislation mandates that class sizes for grades 4-12 are not restricted for 2009-10 and 2010-11.
 * Due to data entry issues, some class sizes in select schools are unavailable for 2010-11.

	OUR SCHOOL	DISTRICT	STATE
Kindergarten	22	20	20
Grade 1	20	19	19
Grade 2	19	19	20
Grade 3	20	20	20
Grade 4	23	20	21
Grade 5	28	19	21

Performance of Each Student Group on the ABCs End-of-Grade Tests

Percentage of Students, Grouped by Gender, Ethnicity, and Other Factors, Who Passed BOTH the Reading and Math Tests

	Male	Female	White	Black	Hispanic	Amer. Indian	Asian	Pacific Islander	Two or More Races	E.D.	N.E.D.	L.E.P.	Migrant Students	Students with Disabilities
Our School	81.9%	79.9%	81.7%	63.6%	>95%	N/A	>95%	N/A	75.0%	65.5%	87.5%	N/A	N/A	21.1%
# of tests taken	138	149	246	22	6	N/A	5	N/A	8	87	200	N/A	N/A	19
District	63.1%	67.2%	72.1%	45.3%	55.9%	61.8%	76.3%	N/A	66.3%	53.7%	81.8%	35.0%	N/A	24.2%
State	64.6%	69.5%	79.0%	48.5%	54.4%	55.1%	78.2%	63.7%	69.3%	53.3%	82.8%	34.4%	45.2%	34.4%

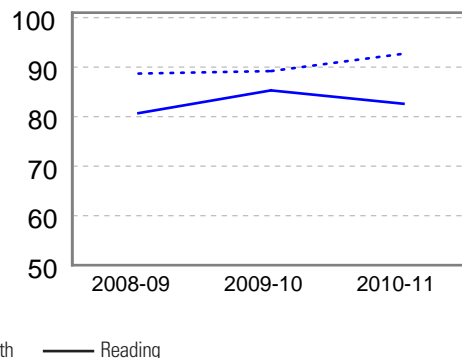
E.D. = Economically Disadvantaged
 N/A = Fewer than five students

N.E.D. = Not Economically Disadvantaged

L.E.P. = Limited English Proficiency

Three-Year Trend of Student Performance on the ABCs End-of-Grade Reading and Math Tests

Percentage of students at or above grade level for the past three years.



To learn more about federal No Child Left Behind (NCLB) requirements, visit <http://www.ncpublicschools.org/nclb/>

For information about the ABCs of Public Education and Adequately Yearly Progress (AYP), visit <http://www.ncpublicschools.org/accountability/>

SAFE, ORDERLY AND CARING SCHOOLS

School Safety

The number of acts of crime or violence reported below includes all acts occurring in school, at a bus stop, on a school bus, on school grounds, or during off-campus, school-sponsored activities.

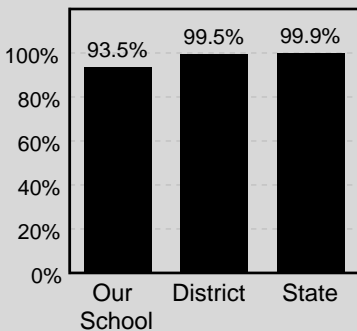
Out of 534 students in our school, there were a total of 0 act[s] of crime or violence.

The number of acts of crime or violence reported per 100 students:

OUR SCHOOL	0
DISTRICT	0.09
STATE	0.26

Access to Technology

Percentage of classrooms connected to the Internet



Keeping you informed

More information about your school is available on the NC School Report Cards website at: <http://www.ncreportcards.org>

HIGH STUDENT PERFORMANCE, CONTINUED

School Performance

Each year, schools in North Carolina may receive several designations based on their performance on the state's ABCs tests. These designations are awarded on the basis of the percentage of students performing at grade level and on whether students have learned as much as they are expected to learn in one year. The designations earned by your school are displayed below, followed by a brief description of each designation.

Our School's Designation(s): School of Distinction, Expected Growth

DESIGNATION	PERFORMANCE: STUDENTS PERFORMING AT GRADE LEVEL	GROWTH: LEARNING ACHIEVED IN ONE YEAR			PERCENT OF SCHOOLS WITH DESIGNATION	
		High Growth	Expected Growth	Expected Growth Not Achieved	DISTRICT	STATE
HONOR SCHOOL OF EXCELLENCE	At least 90% of students at grade level and the school made adequate yearly progress (AYP)				3%	8%
SCHOOL OF EXCELLENCE	At least 90% of students at grade level				0%	1%
SCHOOL OF DISTINCTION	At least 80% of students at grade level		✓		16%	28%
SCHOOL OF PROGRESS	At least 60% of students at grade level				44%	38%
NO RECOGNITION	60 to 100% of students at grade level				22%	15%
PRIORITY SCHOOL	50 to 60% of students at grade level, OR Less than 50% of students at grade level				16%	11%
LOW PERFORMING	Less than 50% of students at grade level				0%	0%

Adequate Yearly Progress (AYP) Results

North Carolina has set target goals that schools must meet to make Adequate Yearly Progress (AYP) under the federal No Child Left Behind (NCLB).

Our school made adequate yearly progress.

Our school met 13 out of 13 AYP targets.

In any group where the percentage of students at a grade level is greater than 95% or less than 5%, the actual values are not displayed because of federal privacy regulations. In these cases the results are shown as >95% or <5% for the group.

QUALITY TEACHERS

	Total Number of Classroom Teachers*	Fully Licensed Teachers	Classes Taught by Highly Qualified Teachers	Teachers with Advanced Degrees	National Board Certified Teachers*	Years of Teaching Experience			Teacher Turnover Rate
						0-3 years	4-10 years	10+ years	
Our School	29	100%	100%	21%	4	7%	31%	62%	3%
District	28	99%	100%	24%	5	15%	34%	52%	9%
State	34	99%	100%	29%	6	18%	33%	49%	10%

* The total number of teachers in this school and the average number of teachers in schools with similar grade ranges at the district and state level.

