

FACILITIES & ATTENDANCE LINE REVIEW

Presented by the UNC Charlotte Urban Institute



February 2015

Project Overview

2

- Evaluated options to improve/optimize use of facilities
- Reviewed:
 - ▣ Facilities
 - ▣ Student locations
 - ▣ Assignment patterns
 - ▣ County growth projections
 - ▣ County growth patterns
- Goal:
 - ▣ To present options for implementation in the 2015-16 and beyond

Criteria for School Consolidation

3

- Utilization/ capacity of facility
- Age/condition
 - Facilities that require extensive renovation
- Future growth potential
- Minimizing disruption of assignments

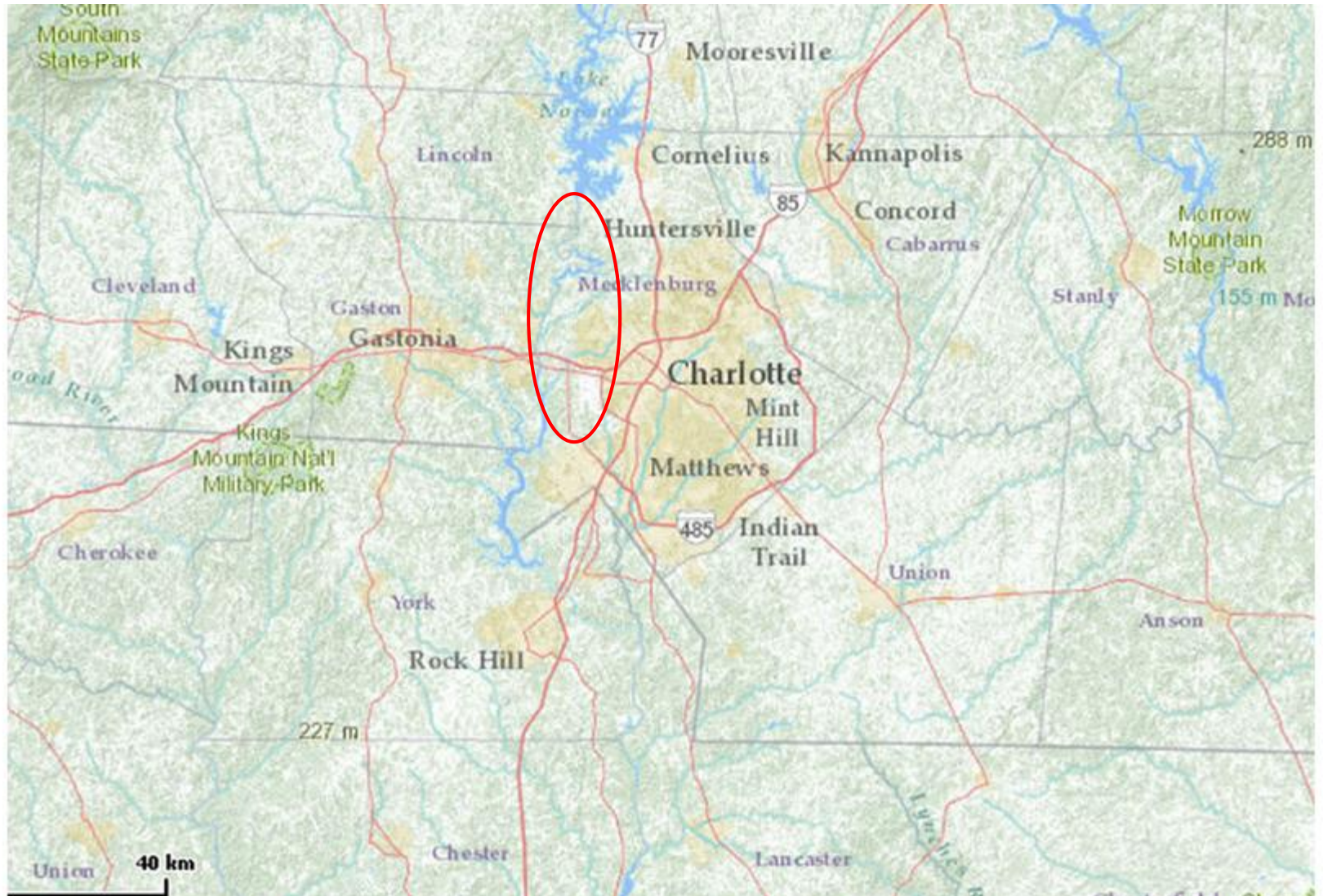
Where has growth occurred?

4

- Charlotte region:
 - ▣ Very specific areas were booming in the region and in specific areas of each county
- Gaston has seen increased growth occurring along eastern side of the county

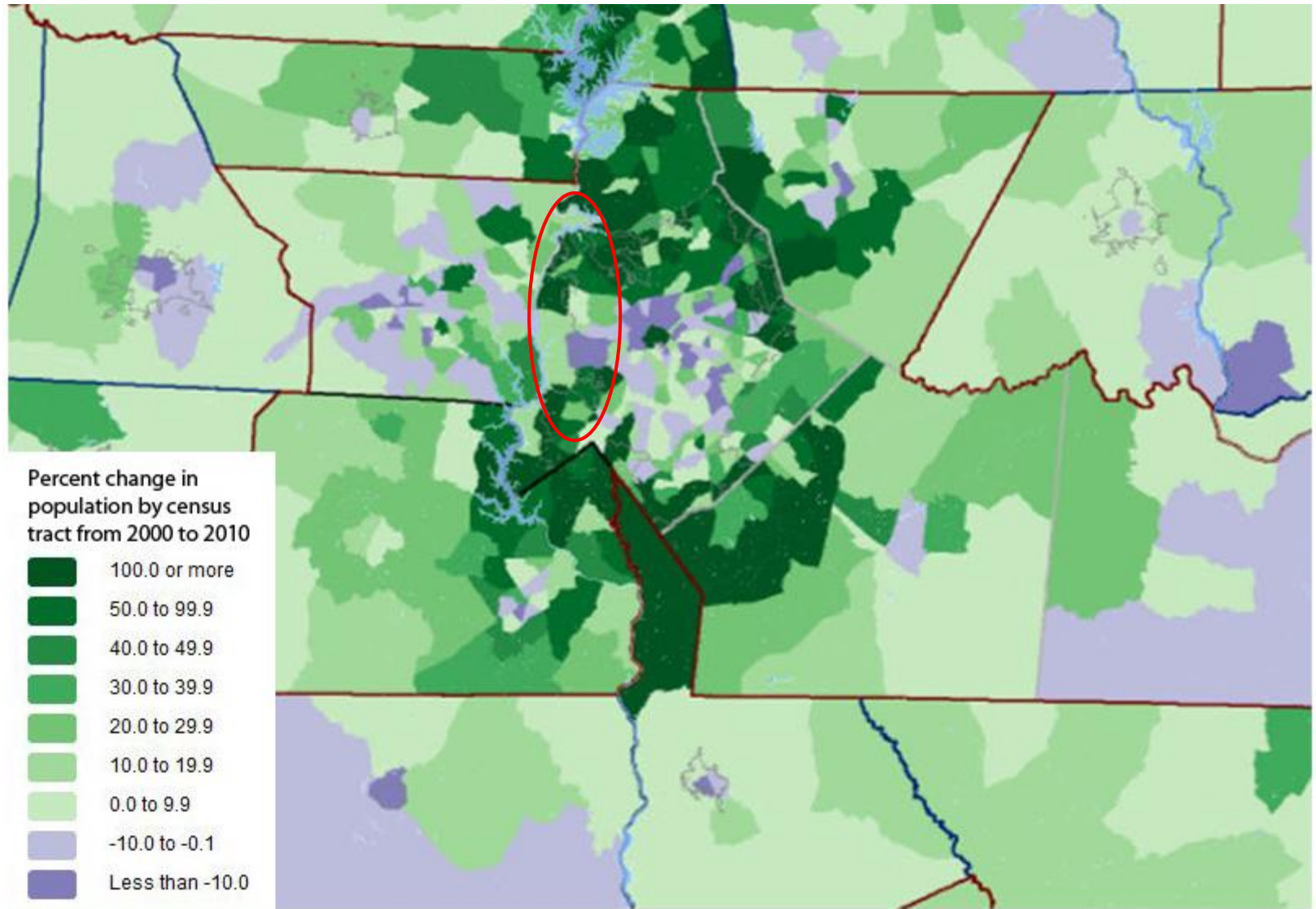
Area of growth in Gaston

5



Population Change from 2000 to 2010

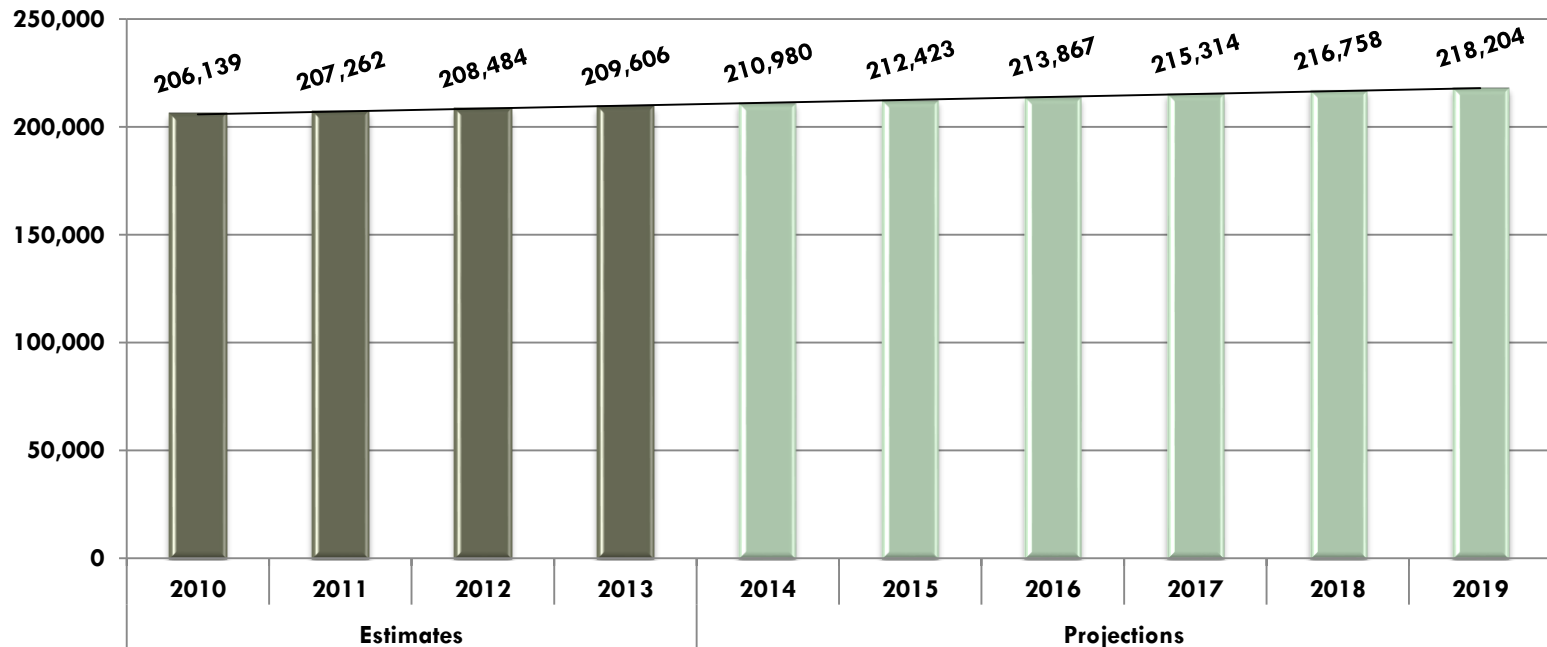
6



County Population Projections

7

Gaston County Population Projections



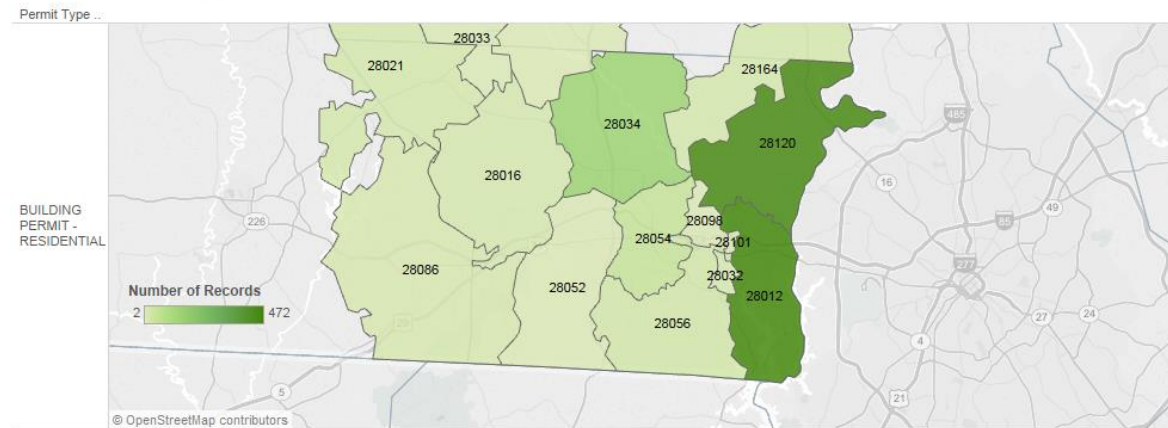
NC Office of State Budget & Management

- Gaston grew by **3,467** from 2010 to 2013
- Gaston is estimated to grow by **8,598** residents from 2010 to 2019

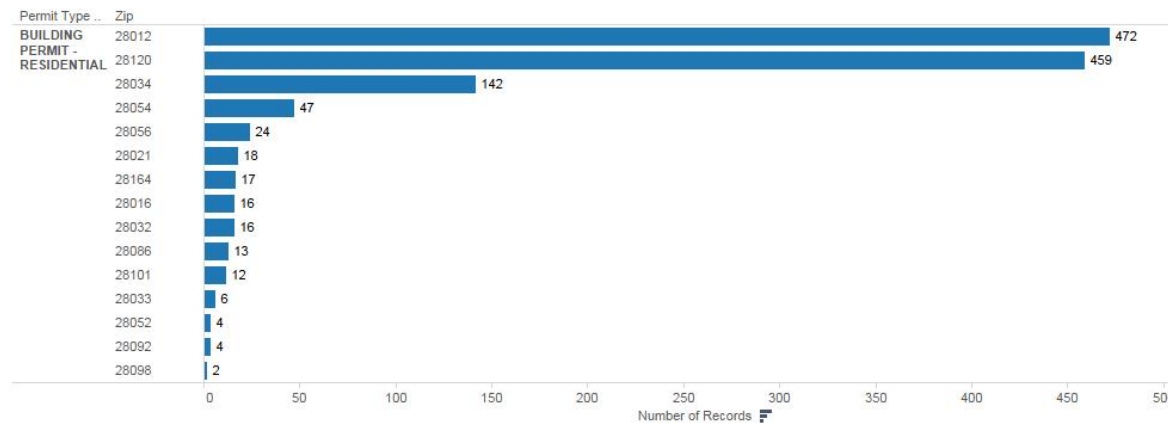
Gaston County Single-Family Housing Permits

8

Map: SF Permits 2011-2014



Graph: SF Permits 2011-2014



Outlook for Western Gaston County

9

- Towns and rural areas in the western part of county will generally see declining population due to aging demographics
- Individual projects will create pockets of growth
- Growth
 - Lowest in the county
 - Likely declining population in most areas

Outlook for Gastonia

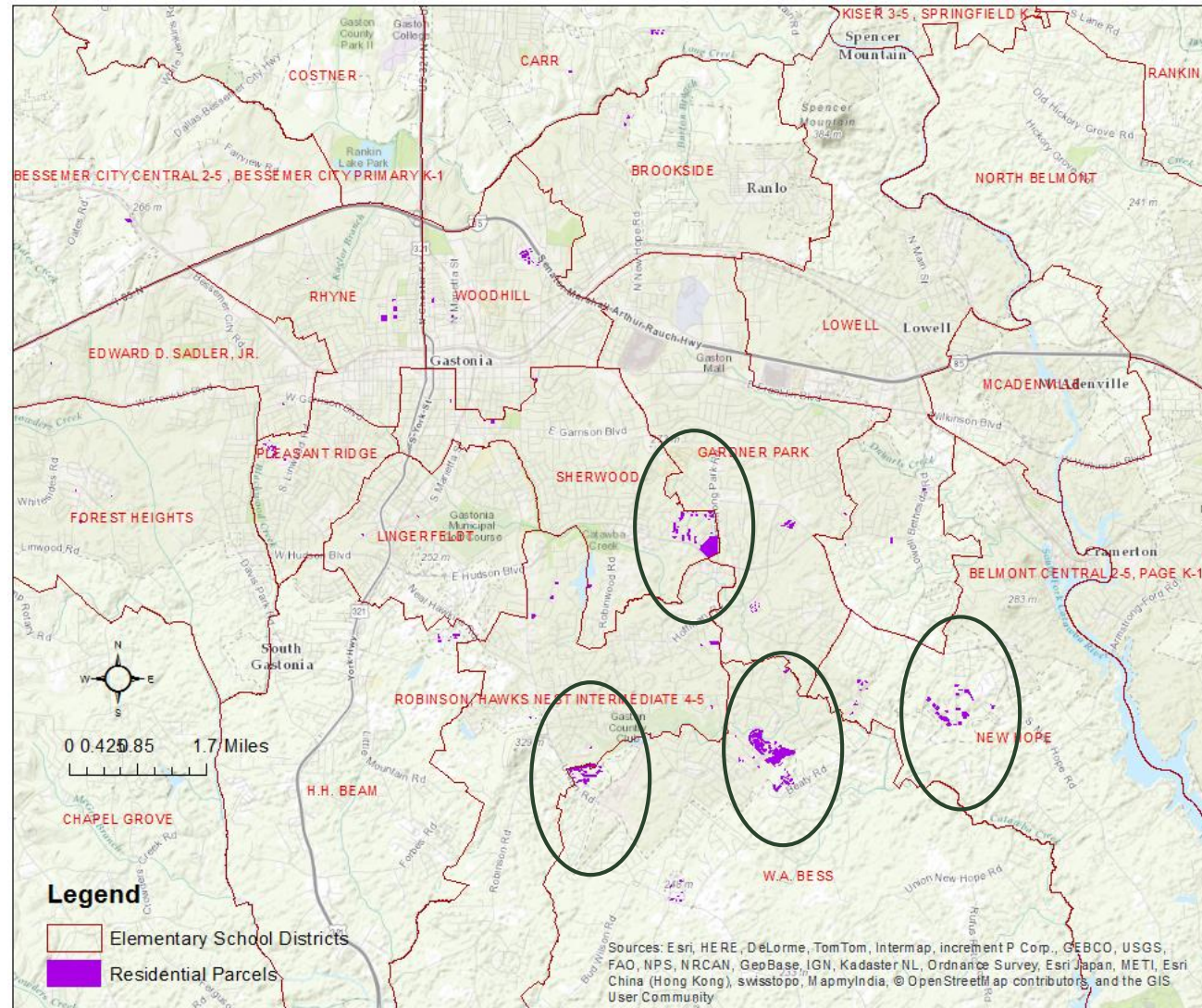
10

- Moderate growth in multiple areas of town
- Declining population in other areas through aging of population
- Growth
 - Very mixed, with some areas growing and others losing population
 - Overall population likely to remain relatively stable, but pockets of growth and decline will likely occur

New residential permits in Gastonia

11

- Residential permits in Gastonia since 2011
- Clustered in a few areas
- Areas of potential growth circled



Outlook for Eastern Gaston County

12

- Currently area with most development potential
 - Active projects in towns and suburban areas
 - Several large projects announced, build-out schedule is uncertain
 - Mix of housing types
- Growth
 - Strongest in county
 - Potential pockets for “break-out” development with rapid build-out
 - Dependent on specific projects

Outlook for Eastern Gaston County

13

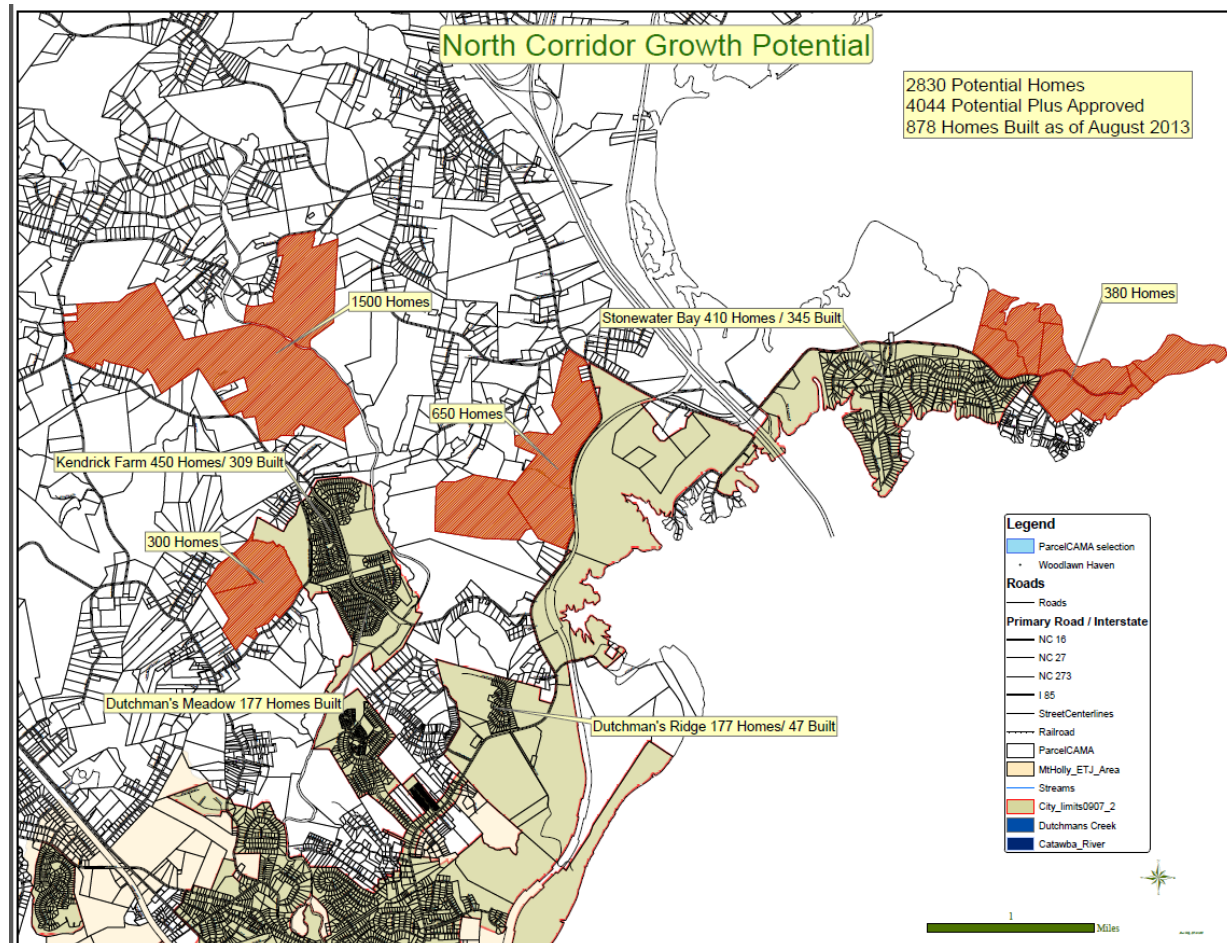
□ Mt Holly

- Several large development projects north of town
- Many by same development company
 - Indicates orderly progression of projects
 - Some interest in 55 and older developments
- Growth: stronger than county average, steady build-outs

Outlook for Mt Holly

14

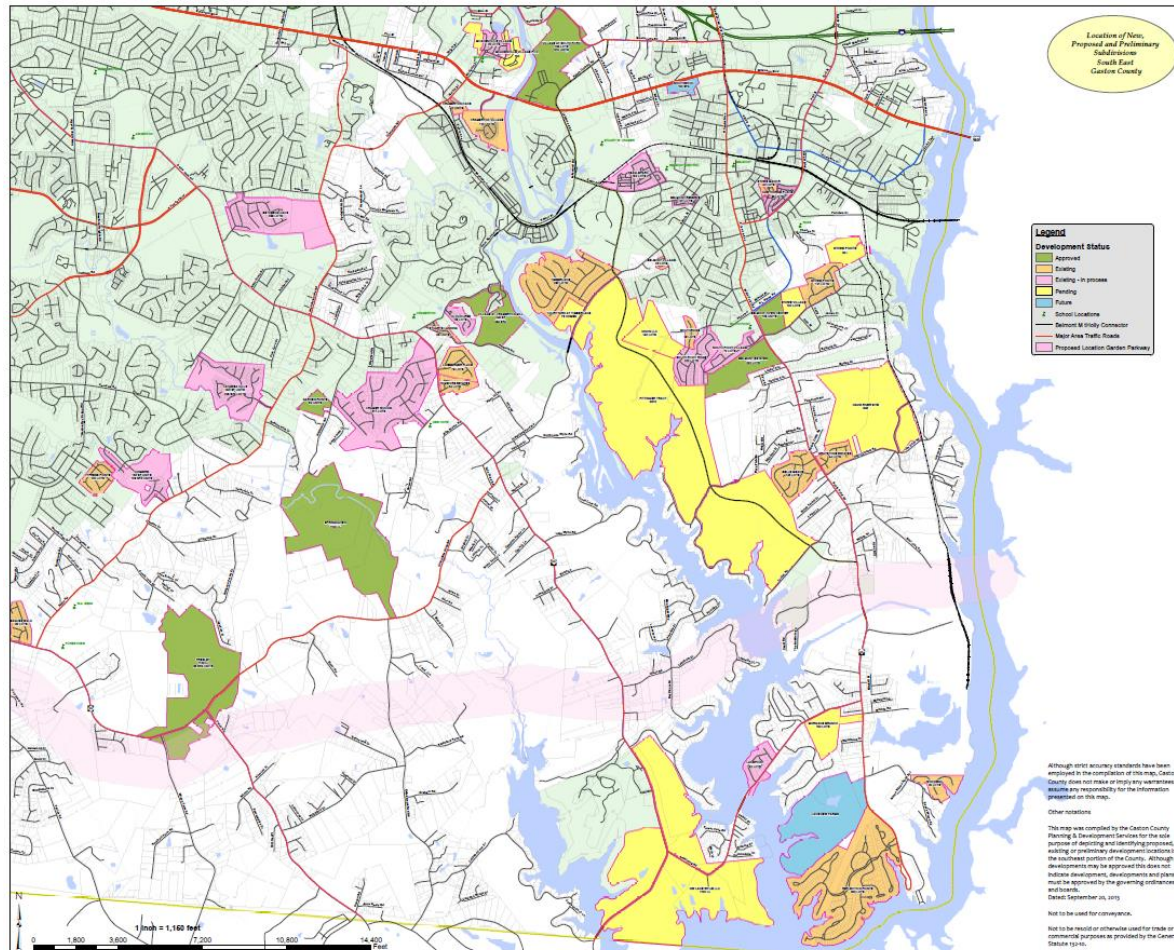
- Proposed developments in the Mt Holly area
- Homes built as of 8/13: 878
- Homes approved: 4,044
- Potential homes: 2,830
- Total: **7,752**



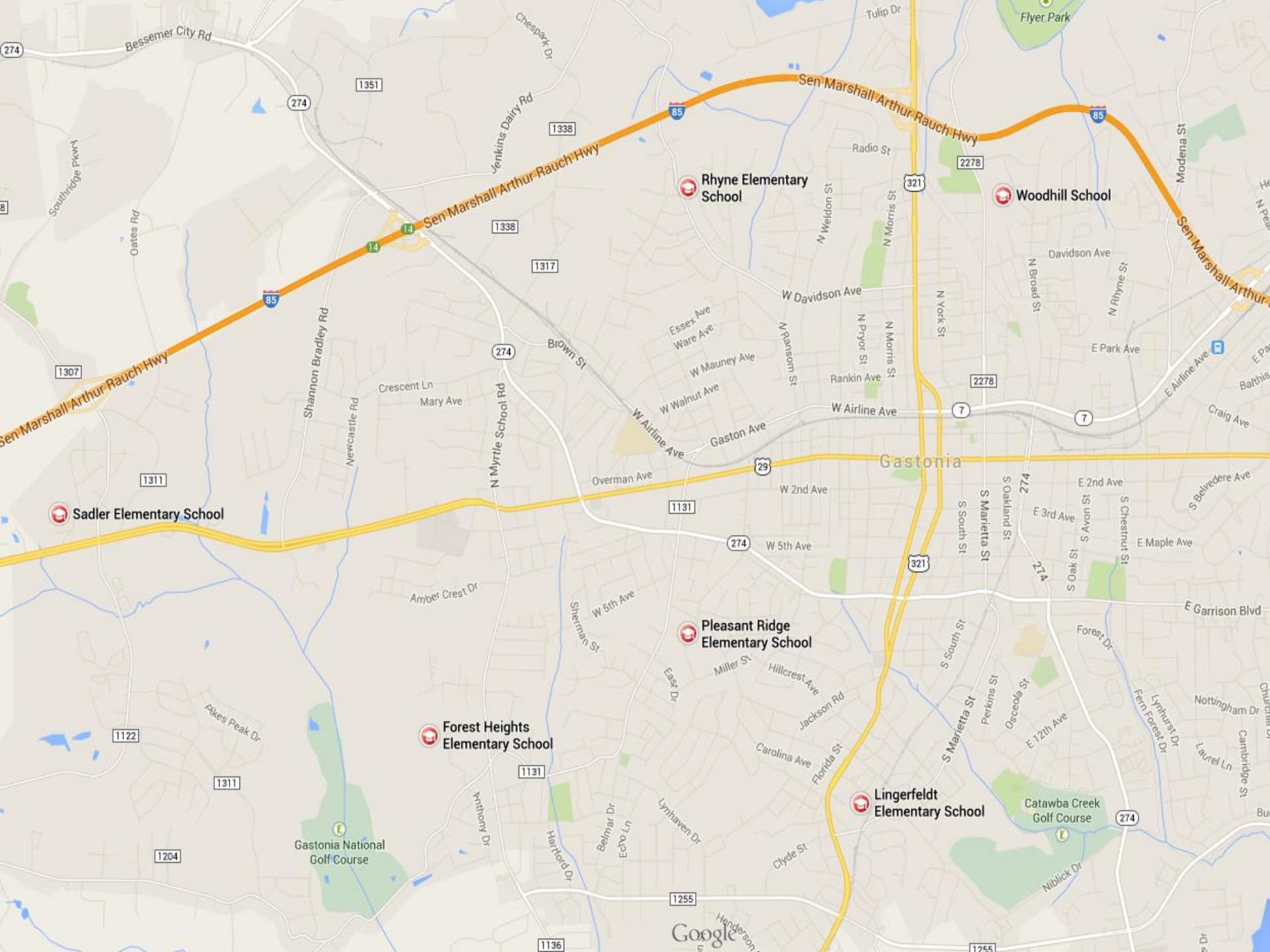
Outlook for Southeastern Gaston County

15

- County planning compiled data on development projects
- Approved: 3,953
- Existing: 1,634
- Existing in Progress: 2,286
- Pending: 5,297
- Future: 192
- **Total: 13,362**



RECOMMENDATION 1
CONSOLIDATION OF FOREST
HEIGHTS, PLEASANT RIDGE, AND
RHYNE ELEMENTARY SCHOOLS



Underutilized Elementary Schools

18

- Changing demographics have left a cluster of central/western elementary schools below capacity
- Of these schools, **Rhyne Elementary** is the oldest (original building 1955, weighted sq. ft. age 1962), and would require large amounts of funding to maintain/update
- Forest Heights and Pleasant Ridge have weighted sq. ft. ages of 39 years old each
- Recommend consolidating Rhyne Elementary with other schools due to low residential growth potential, age of building and cost to maintain/update

Proposed Boundaries

19

Gaston County Schools

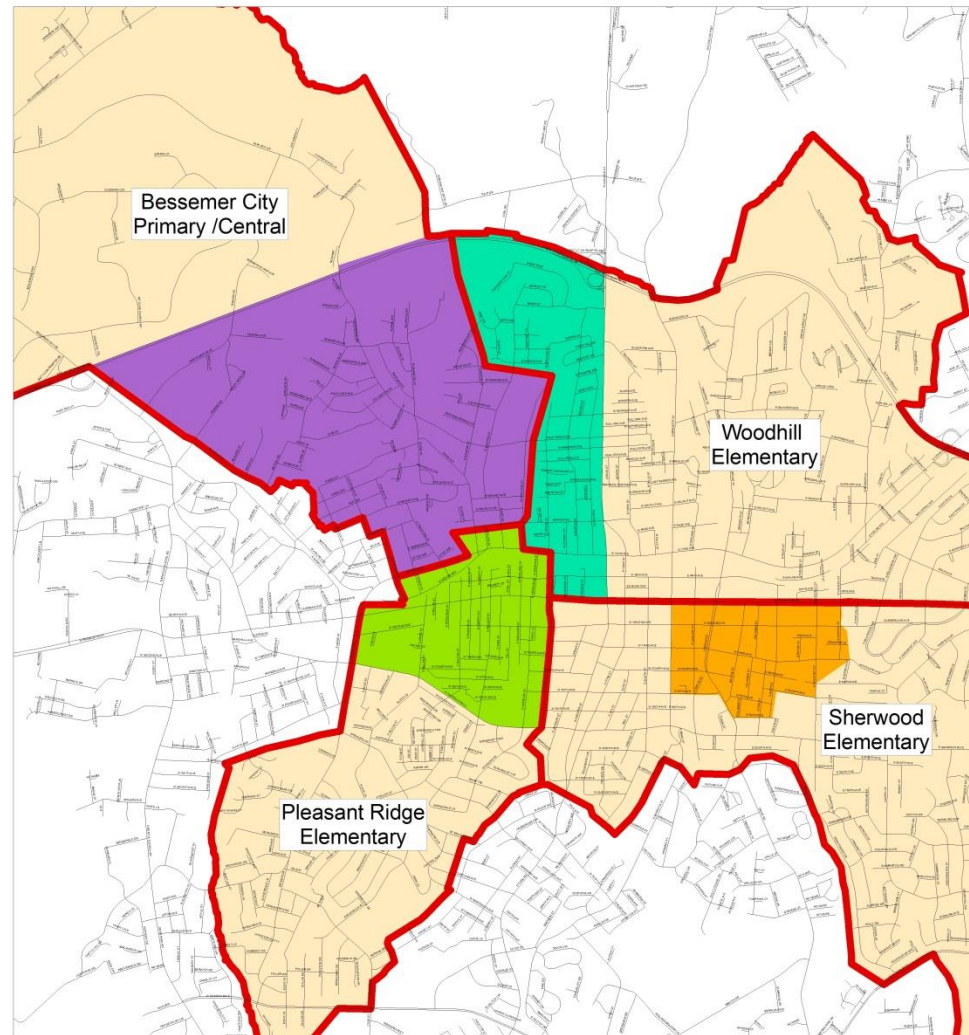
Proposed School Boundary
Changes for 2015-2016

Legend

- Streets
- Proposed School Boundaries
- Rhyne to Bessemer City Primary/Central
- Rhyne to Pleasant Ridge
- Rhyne to Woodhill
- Woodhill to Sherwood



0 0.5 1 2 3 4 Miles



2015-16 School Enrollment Numbers

20

- Shift 450 current Rhyne students to
 - Bessemer City Primary: 139
 - Bessemer City Central: 109
 - Pleasant Ridge: 80
 - Woodhill Elementary: 122
- Shift current Woodhill students to
 - Sherwood Elementary: 63

Projected Student Enrollment 2015-16

21

School	KI	1st	2nd	3rd	4th	5th	Total	2015-16 Capacity	% Capacity
Bessemer City Central				143	164	141	448	490	91.4%
Bessemer City Primary	170	147	160				477	482	99%
Pleasant Ridge Elementary	82	72	71	58	67	59	409	411	99.5%
Sherwood Elementary	108	118	138	127	102	118	711	743	95.7%
Woodhill Elementary	122	87	88	80	82	71	530	567	93.5%

- Projected enrollment of schools for 2015-16 with consolidation of Rhyne Elementary
- These are reflective of the proposed boundary changes on the previous map

Potential Benefits

22

- Avoids further expenditures on existing facility
- Better use of adjoining facilities
- New lines follow more natural boundaries
- Improves some feeder patterns

RECOMMENDATION 2
NEW ELEMENTARY SCHOOL IN
WEST GASTONIA

Proposed Elementary School in West Gastonia

24

- Proposed new school located near site of current Pleasant Ridge Elementary
- Centrally located and easily accessible to Forest Heights Elementary, Pleasant Ridge Elementary, AND Rhyne Elementary families

Proposed Elementary School in West Gastonia

25

- New 800 seat capacity elementary school to replace current Pleasant Ridge Elementary
- Expand current Pleasant Ridge Elementary school boundaries to capture additional students to attend new Pleasant Ridge Elementary in 2016-17
- Students being shifted from Rhyne Elementary to adjoining schools will only be moved once

Proposed Boundaries for Forest Heights Elementary

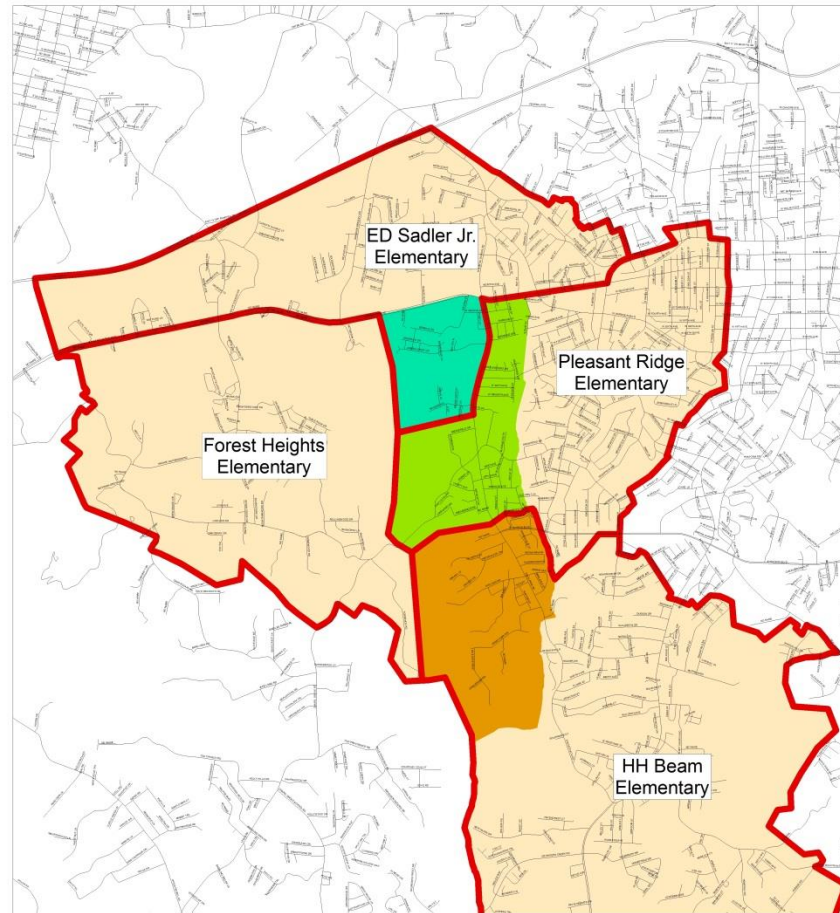
26

Gaston County Schools

Proposed School Boundary
Changes for 2016-2017

Legend

- Streets
- Proposed School Boundaries
- Forest Heights to Pleasant Ridge
- Forest Heights to ED Sadler
- Forest Heights to HH Beam



Proposed Boundaries for ED Sadler and Chapel Grove Elementary Schools

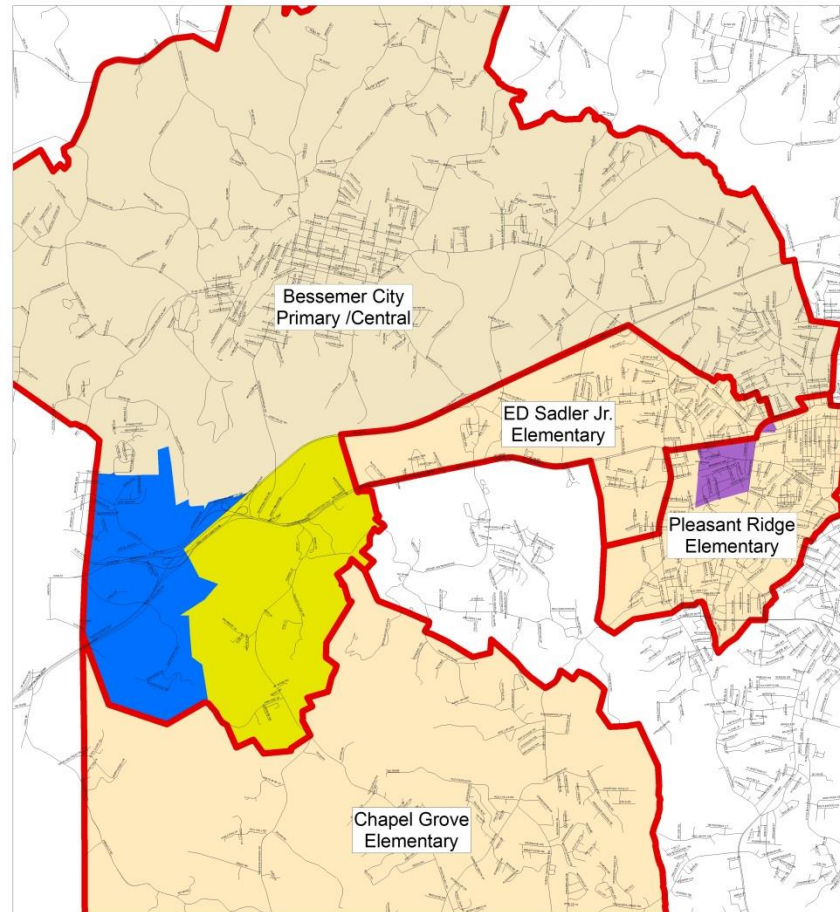
27

Gaston County Schools

Proposed School Boundary
Changes for 2016-2017

Legend

- Streets
- Proposed School Boundaries
- ED Sadler to Pleasant Ridge
- ED Sadler to Bessemer City Primary/Central
- Chapel Grove to Bessemer City Primary/Central



Proposed Boundaries for New Elementary School in West Gastonia

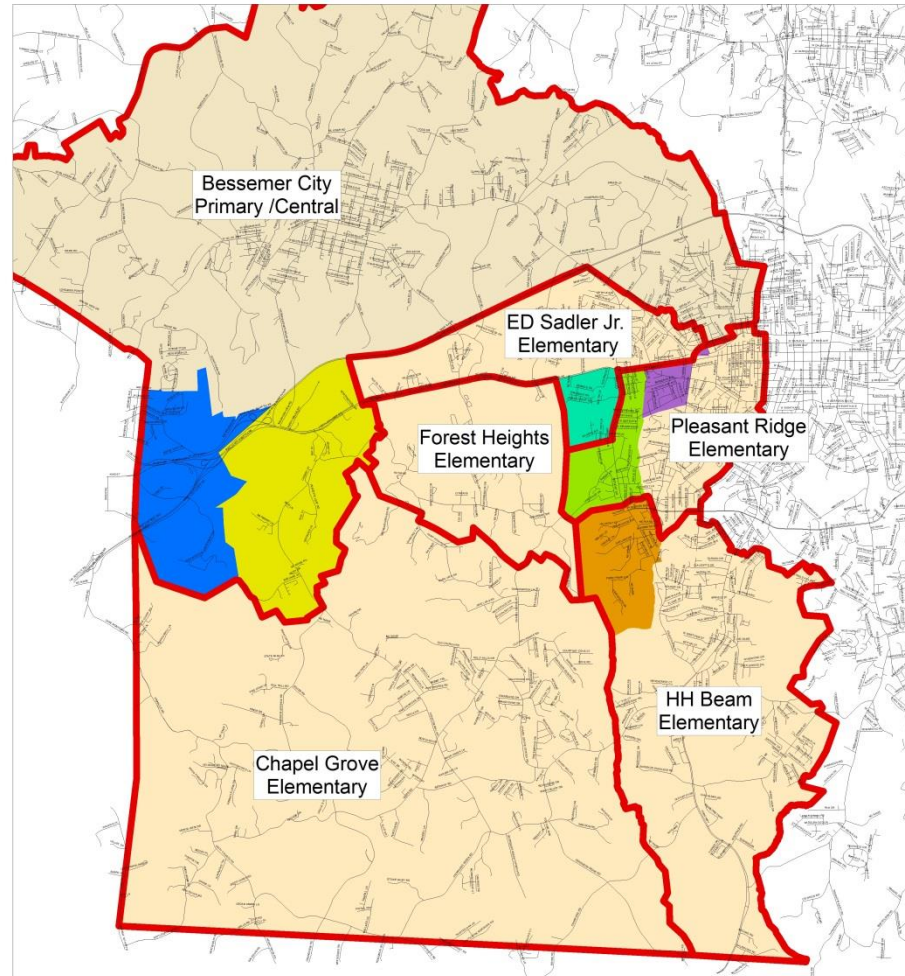
28

Gaston County Schools

Proposed School Boundary
Changes for 2016-2017

Legend

- Streets
- Proposed School Boundaries
- ED Sadler to Pleasant Ridge
- Forest Heights to Pleasant Ridge
- Forest Heights to ED Sadler
- Forest Heights to HH Beam
- ED Sadler to Bessemer City Primary/Central
- Chapel Grove to Bessemer City Primary/Central



2016-17 School Enrollment Numbers

29

- Shift 386 students
 - Forest Heights to Pleasant Ridge: 77
 - Forest Heights to ED Sadler: 49
 - Forest Heights to HH Beam: 151
 - ED Sadler to Pleasant Ridge: 72
 - ED Sadler to Bessemer City Primary/Central: 31
 - Chapel Grove to Bessemer City Primary/Central: 6

Projected Student Enrollment 2016-17

30

School	KI	1st	2nd	3rd	4th	5th	Total
Bessemer City Central				167	148	177	492
Bessemer City Primary	152	166	153				471
Chapel Grove	85	79	82	72	65	70	453
ED Sadler	89	77	79	78	69	99	491
Forest Heights	19	17	15	24	15	18	108
HH Beam	124	123	117	129	111	126	730
Pleasant Ridge Elementary	101	95	85	86	72	108	547

Projected Student Enrollment 2016-17

31

- New Pleasant Ridge Elementary would have 655 students enrolled in 2016-17 SY
 - 108 from Forest Heights Elementary
 - 547 from Pleasant Ridge Elementary

RECOMMENDATION 3
NEW MIDDLE SCHOOL TO REPLACE
STANLEY MIDDLE

Proposed New Middle School

33

- With increased growth expected in eastern part of county, new school located in Stanley would reduce overcapacity issues occurring at Mt Holly Middle School
- Stanley Middle is located on enough land to build a new middle school while current school is open
- Favorably located for expected population growth and development in eastern Gaston County

Relieve Capacity Issues

34

- New 800 seat school would relieve overcrowding of current 600 seat school
- Capacity of Mt Holly Middle School is currently 94% (2014-15)
- Capacity of Stanley Middle School is currently 81% (2014-15)
- New school would shift 119 students from Mt Holly Middle School students to new Stanley Middle School

Projected Student Enrollment 2016-17

35

Projected Middle School Student Enrollment

	6th Grade	7th Grade	8th Grade	Total
Stanley Middle	183	199	211	603
Mt Holly Middle	232	227	199	658

- New school would shift 119 students from Mt Holly Middle School students to new Stanley Middle School

Proposed Boundaries for Mount Holly Middle and Stanley Middle

36

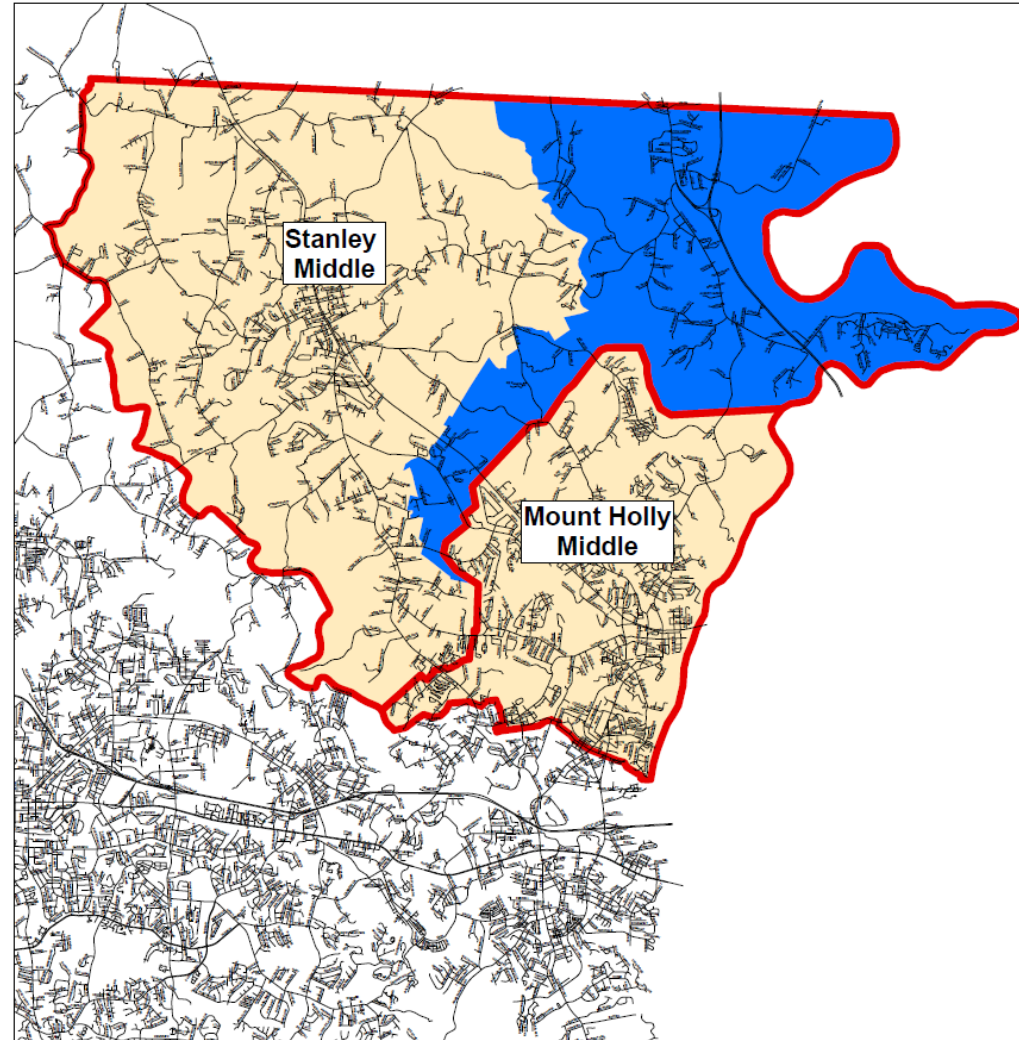
Gaston County Schools

Proposed School Boundary
Changes for 2016-2017

Legend

- Streets
- Proposed School Boundaries
- Mt. Holly to Stanley

0 0.5 1 1.5 2
Miles



COMMENTS OR QUESTIONS:

NEWSCHOOLS@GASTON.K12.NC.US



UNC CHARLOTTE

Urban Institute

QUESTIONS



UNC CHARLOTTE

Urban Institute